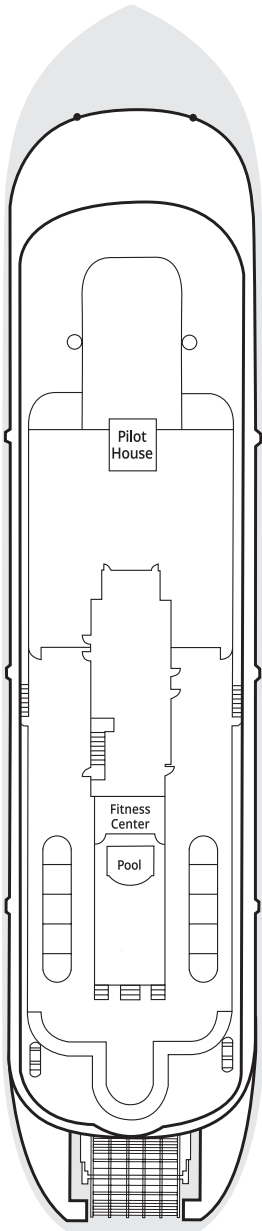


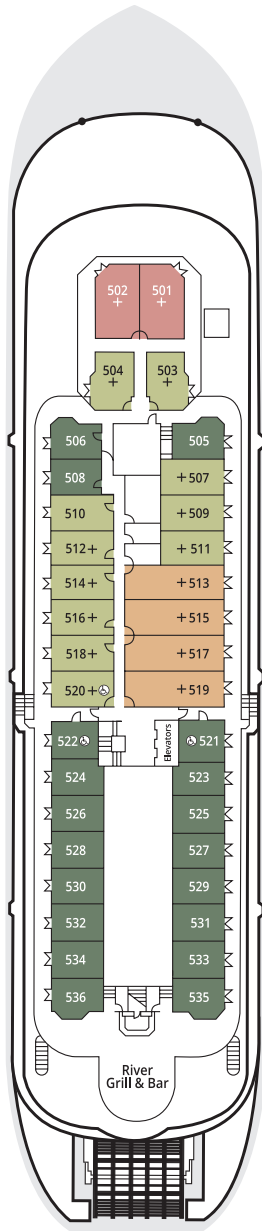
AMERICAN QUEEN®

The largest steamboat ever built, the grand *American Queen* is a gracious and elegant triumph of American ingenuity. Our flagship paddlewheeler is a gentle soul packaged within the ornate detailing that embellishes her exterior. Any traveler who chooses to cruise on this iconic riverboat will soon find that her steady heart beats to the rhythm of music that resounds within her walls. Embark on a river cruise on the *American Queen*, the wondrous steamboat that introduces her guests to the waters that she calls home – the great rivers that have sustained towns, wildlife and memories throughout history.



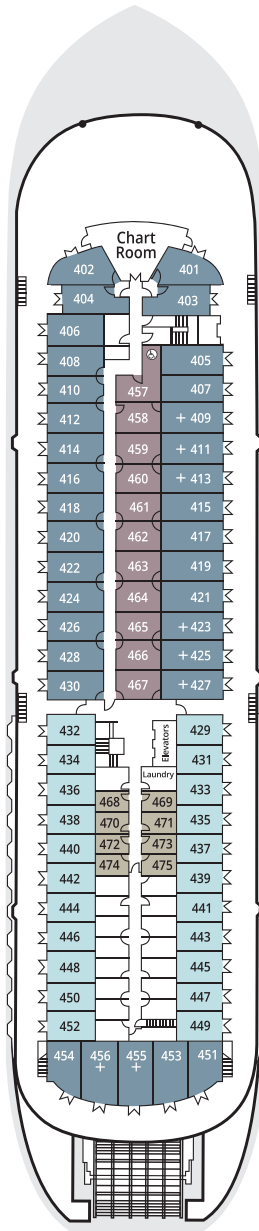
**DECK 6
SUN DECK**

Pilot House
Fitness Center
Pool



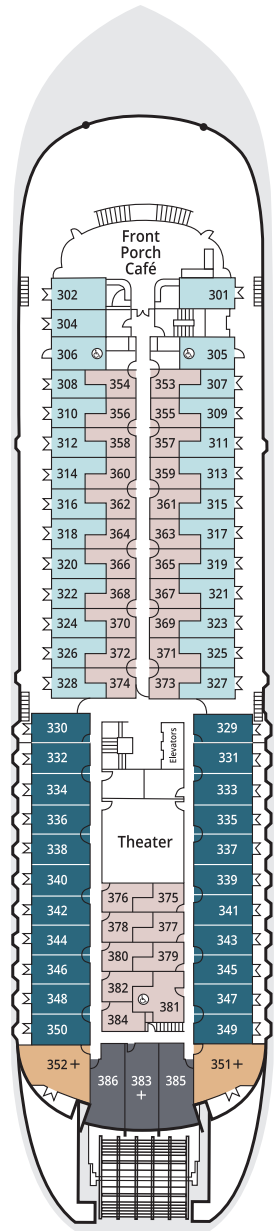
**DECK 5
PROMENADE DECK**

River Grill & Bar
Suites & Staterooms



**DECK 4
OBSERVATION DECK**

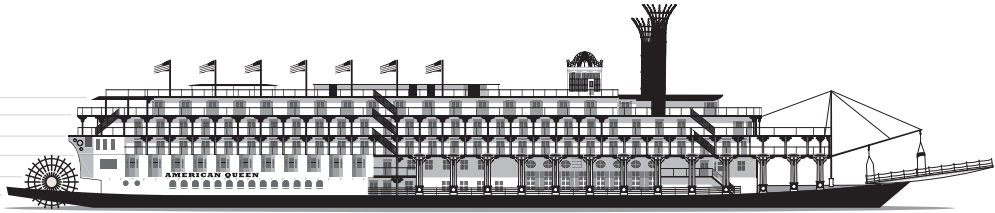
Chart Room
Guest Laundry (Mid-Ship)
Staterooms



**DECK 3
TEXAS DECK**

Front Porch Café
Theater
Suites & Staterooms

Deck 6
Deck 5
Deck 4
Deck 3
Deck 2
Deck 1



SUITES & STATEROOMS CATEGORIES

- OS Owner's Suite with Exclusive Veranda DECK 5

- LS Luxury Suite with Private or Open Veranda DECK 3
DECK 5

- DS Deluxe Suite with Open Veranda DECK 5

- JS Junior Suite with Open Veranda DECK 5

- PS Paddlewheel Stateroom DECK 3

- A Deluxe Outside Stateroom with Private Veranda DECK 3

- B Outside Stateroom with Open Veranda DECK 4

- C Outside Stateroom with Open Veranda DECK 2
DECK 3
DECK 4

- D Deluxe Outside Stateroom with Bay Window DECK 2

- E Inside Stateroom DECK 3

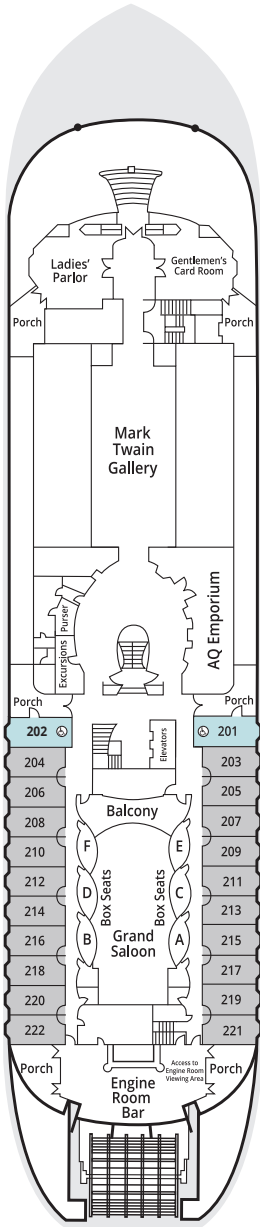
- SD Single Deluxe Stateroom DECK 4

- SI Single Inside Stateroom DECK 4

Accessible / Partially Accessible Suites and Staterooms
Stateroom 381 features a roll-in shower.

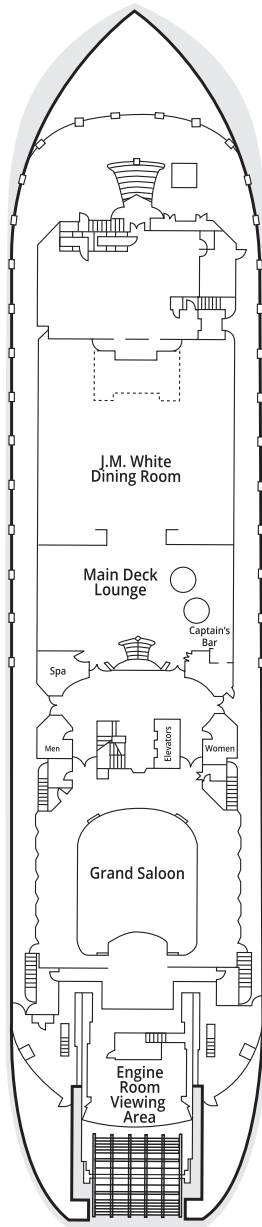
Featuring separate entrances with interior connecting doors, category SD staterooms 458 to 467 connect with the adjoining odd-numbered B outside staterooms 409 to 427.

+ Triple Occupancy



DECK 2
CABIN DECK

- Ladies' Parlor
- Gentlemen's Card Room
- Mark Twain Gallery
- Purser's Office
- Shore Excursions Desk
- AQ Emporium - Gift Shop
- Engine Room Bar
- Staterooms



DECK 1
MAIN DECK

- Grand Saloon
- Main Deck Lounge
- Captain's Bar
- Spa
- J.M. White Dining Room
- Engine Room Viewing Area

SPECIFICATIONS

Year built/Refurbished	1995/2017
Length	420 Ft.
Guest Decks	6
Suites and Staterooms	213
Guests	417
Crew	172

YOUR HOME AWAY FROM HOME

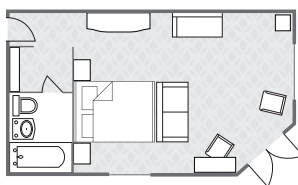
Welcome aboard the iconic *American Queen*, where you can relax in a warm, inviting atmosphere of southern charm laced with modern conveniences. Fine linens and plush bedding ensure that you are well-rested to fully enjoy all included shore tours, historical lectures and toe-tapping musical performances. Open-veranda categories afford neighboring guests the unique opportunity to enjoy a social atmosphere, swapping stories and forming lasting friendships with fellow travelers. From cozy staterooms to opulent suites, the *American Queen* has accommodations for a variety of lifestyles and budgets.


OWNER'S SUITE WITH EXCLUSIVE VERANDA | 348 SQ. FT.

OS



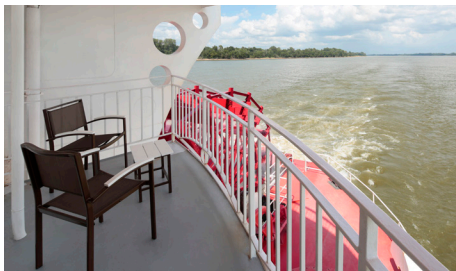
Open French doors and step out onto your veranda to unwind on your amply furnished patio. Adorned with 11-foot vaulted ceilings, overhead lighting and a cozy interior lounging area with a sofa-bed and cocktail tables, these expansive suites can accommodate up to three guests, and epitomize luxurious river cruising. Relish the many exclusive benefits of our Commodore Services while your personal River Butler attends to your every need.



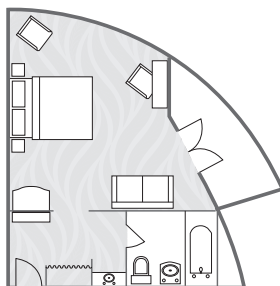
- Queen bed
- Full bathroom with standard tub/shower combination
- Sitting area with sofa-bed
- Dressing area with granite vanity and mirror
- Flat-screen TV
- Safe, Bathrobes and Slippers
- Coffee maker and mini refrigerator
- French doors open to exclusive veranda
- Furnished patio with sofa, two chairs and a coffee table
- Exterior access
- Located on Promenade Deck
- Commodore Services,  including a River Butler

LUXURY SUITE WITH PRIVATE OR OPEN VERANDA | 345-420 SQ. FT.


LS

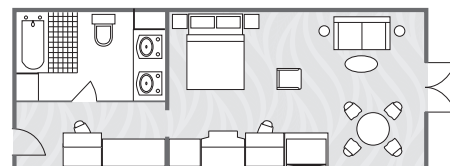


Our spacious, elegant suites are furnished to provide the warm ambiance of a fine Southern estate. Open your French doors and delight in sweeping river views as you sip a beverage and share conversation in your cozy sitting area. With two configurations to choose from — either one large room with a private veranda or two adjoining rooms with an open veranda — these suites are the ideal choice for family and friends vacationing together.



LS SUITES ON TEXAS DECK

- Queen bed or two single beds
- Full bathroom with tub and shower or standard tub/shower combination
- Sitting area with sofa-bed
- Vanity, mirror and desk
- Flat-screen TV
- Safe, Bathrobes and Slippers
- Coffee maker and mini refrigerator
- French doors open to deck or veranda
- Interior and/or exterior access
- Located on Promenade and Texas Decks
- Commodore Services,  including a River Butler



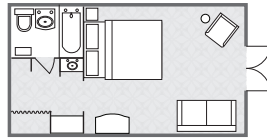
LS SUITES ON PROMENADE DECK


DELUXE SUITE WITH OPEN VERANDA | 260 SQ. FT.

DS



You will feel right at home on the river in our magnificent suites. Indulge in a soothing soak in your tub, then retire to your cozy armchair or sofa, prop your feet up on the ottoman and read through the River Times — our daily program — to discover the delights that await.



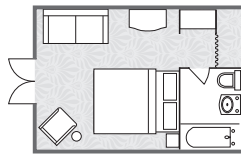
- Queen bed or two single beds
 - Full bathroom with standard tub/shower combination
 - Sitting area
 - Vanity and mirror
 - Flat-screen TV
 - Safe, Bathrobes and Slippers
 - French doors open to deck
 - Interior and/or exterior access
 - Located on Promenade Deck
 - Commodore Services (excludes River Butler) 
- Partially accessible suite 520 is 275 sq. ft. and features a standard tub/shower combination.*

JUNIOR SUITE WITH OPEN VERANDA | 145-230 SQ. FT.

JS



Settle into your sitting area, open the French doors to the deck, and greet the day as the banks of the river majestically slip by. Some staterooms in this category offer a view of the paddlewheel, while others provide expansive views of America's heartland.



- Queen bed or two single beds
 - Full bathroom with standard tub/shower combination
 - Flat-screen TV
 - Safe, Bathrobes and Slippers
 - Sitting area
 - Vanity and mirror
 - French doors open to deck
 - Interior and/or exterior access
 - Located on Promenade and Observation Decks
- Partially accessible suites 521 and 522 are 230 sq. ft. and feature a standard tub/shower combination.*



In-suite
AMENITIES

Guests holding reservations for select suite-level accommodations will receive our exclusive *Commodore Services*. This elite level of services includes a bottle of wine and a fruit basket upon arrival, preferred dining arrangements, reserved balcony seating at the nightly shows and an invitation to dine with senior officers of the boat.
*Inclusions vary by vessel.

ADDITIONAL AMENITIES

- Pre-boarding privileges
- Packing and unpacking of luggage
- Shoe shine
- Laundry and pressing service
- Afternoon tea served in room
- Pre-dinner canapes
- Reserved theater seating

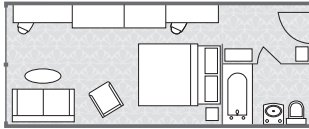


PADDLEWHEEL STATEROOM | 265-320 SQ. FT.

PS



These spacious retreats offer unmatched views, each with a 6-foot-square viewing window that overlooks the paddlewheel, for a truly authentic steamboating experience. Guests are enamored with the allure of the more traditional experience from sound and vibration of the close proximity of the turning paddlewheel.



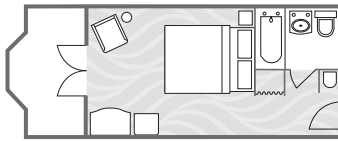
- Stateroom 383: 320 sq. ft.
- Stateroom 385 and 386: 265 sq. ft.
- Traditional paddlewheel experience
- Queen bed or two single beds
- Full bathroom with standard tub/shower combination
- Flat-screen TV
- Safe, Bathrobes and Slippers
- Sitting area
- 6-foot-square picture window overlooking the paddlewheel
- Vanity, mirror and desk
- Interior access
- Located on Texas Deck

DELUXE OUTSIDE STATEROOM WITH PRIVATE VERANDA | 190 SQ. FT.

A



With a private veranda, these staterooms are so enjoyable that you might decide to extend your journey. Relax in a cozy armchair and enjoy the view as you anticipate the activities of the day.



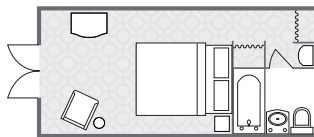
- Queen bed or two single beds
- Full bathroom with standard tub/shower combination
- Flat-screen TV
- Safe, Bathrobes and Slippers
- French doors open to private veranda
- Interior access
- Located on Texas Deck

OUTSIDE STATEROOM WITH OPEN VERANDA | 160-230 SQ. FT.

B



Can you imagine opening French doors to a sweeping river vista and the sweet scent of magnolia trees? Sit on the deck outside your stateroom and greet early-morning strollers, relax in bed with your favorite book or soak in a hot bath.



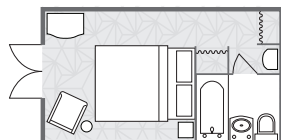
- Queen bed or two single beds
- Full bathroom with standard tub/shower combination
- Flat-screen TV
- French doors open to deck
- Interior and/or exterior access
- Located on Observation Deck

OUTSIDE STATEROOM WITH OPEN VERANDA | 140-180 SQ. FT.

C



Open your French doors, and enjoy the fresh air. Sit on the deck outside your stateroom, and take in the gently changing views of the landscape, or indulge in a leisurely morning in bed with room service.



- Queen bed or two single beds
- Full bathroom with shower or standard tub/shower combination
- Flat-screen TV
- French doors open to deck
- Exterior access
- Located on Observation, Texas and Cabin Decks

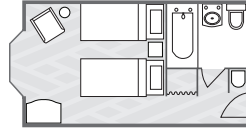
Partially accessible staterooms 305 and 306 (180 sq. ft.) feature standard tub/shower combinations.

DELUXE OUTSIDE STATEROOMS WITH BAY WINDOW | 190 SQ. FT.

D



An expansive bay window overlooking the scenery of America's heartland is the main draw of this spacious category. Curl up in front of the window with a new novel, and savor a moment that belongs to only you.



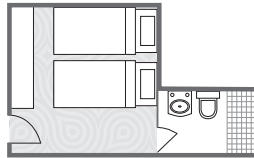
- Queen bed or two single beds
- Full bathroom with standard tub/shower combination
- Flat-screen TV
- Interior access
- Located on Cabin Deck

INSIDE STATEROOMS | 130 SQ. FT.

E



Surrounded by wonderful period details, accompanied by every modern convenience, these cozy havens will make your cares disappear. Ample shelving and storage spaces keep necessities out of the way yet easily accessible.



- Queen bed or two single beds
- Full bathroom with shower
- Flat-screen TV
- Interior access
- Located on Texas Deck

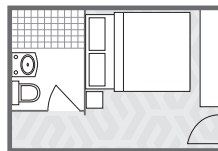
Accessible stateroom 381 is 217 sq. ft. and features a roll-in shower.

SINGLE DELUXE STATEROOM | 130 SQ. FT.

SD



Greet the day in your cozy stateroom, relaxing before breakfast, or simply enjoy a leisurely morning in bed with room service.



- Queen bed
- Full bathroom with shower
- Flat-screen TV
- Interior access

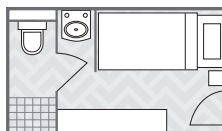
Partially accessible stateroom 457 is 175 sq. ft. and features a standard tub/shower combination and twin beds.

SINGLE INSIDE STATEROOMS | 80 SQ. FT.

SI



These intimate cabins with ample storage space are slightly scaled down to accommodate the independent traveler, and feature a single bed.



- Single bed
- Full bathroom with shower
- Flat-screen TV
- Interior access
- Located on Observation Deck